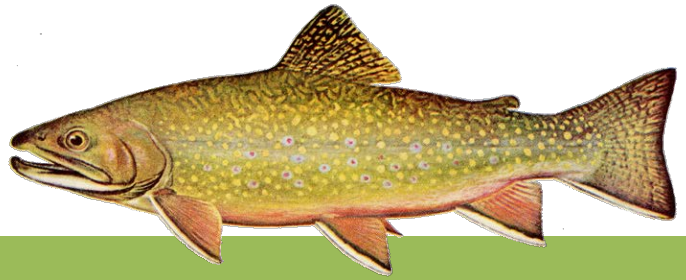


**CT DEEP 2016
FISHING REPORT NUMBER 3
4/28/2016**



Brook Trout (*Salvelinus fontinalis*)



YOU CAN FIND US DIRECTLY ON FACEBOOK. This page features a variety of information on fishing, hunting, and wildlife watching in Connecticut. The address is www.facebook.com/CTFishandWildlife.



INLAND REPORT

TROUT STOCKING—Approximately 371,000 trout were stocked before Opening Day into 100 lakes and ponds and nearly 170 rivers and streams located throughout Connecticut. DEEP's in-season stockings are now underway with nearly 230,000 additional trout scheduled to be stocked between Opening Day and the end of May.

TROUT- RIVERS & STREAMS - Conditions should be fairly good for trout fishing this weekend, with Saturday being the better weather day for anglers. There are plenty of recently stocked trout waiting for anglers, flows are very fishable but remain generally lower than typical spring levels (*see stream flow graphic on page 4*) but some rain is forecast for late in the weekend and early next week.

Good reports last week from the West Branch Farmington River, Farmington River, Housatonic River, Natchaug River, Willimantic River, Fivemile River (good for those with patience to learn the river), Quinebaug River (some nice action being found in the Putnam area) and Eightmile River; and fair reports from the Pequonnock River, Hammonasset River (some nice fish are being found), West River (spotty), and Scantic River (action is improving). Nymphs and streamers are a good option for many, especially earlier in the day, with some better action found on top later in the day. Mealworms and crawlers are working for bait anglers.

FREE FISHING DAY IS SATURDAY, MAY 7, 2016

On this date anyone can fish inland or marine waters without a fishing license (all other regulations including minimum size and creel limits remain in effect).

Among the events scheduled is a "Family Fishing Day", part of DEEP's "**Great Park Pursuit Connecticut State Parks Family Adventure**" at Stratton Brook State Park (www.ct.gov/deep/strattonbrook). Open to families and children, this free event will run from 9:00 am to 3:00 pm and there will be plenty of activities including fishing on the pond, fish sampling, fish stocking, a fish fry, and fun activities for all ages. Join the DEEP [CARE](#) program's certified fishing instructors and the Hammonasset Chapter of Trout Unlimited for some fun family fishing.

FIND TROUT STOCKING MAPS ON OUR WEBSITE

Maps of all of the state's trout streams and rivers showing the many stocking and access points are available online at:

www.ct.gov/deep/troutstockingmaps.



Farmington River - Fishing remains good to very good and conditions for the weekend should be good, with comfortable spring weather forecast for most of the weekend and very fishable flows continuing. Currently West Branch flows are clear, on the low side (currently 145 cfs at Riverton with the Still River adding another 80 cfs).

Hatches/patterns. Hendrickson hatch continues to move upstream, likely in the catch-and-release area and up to Riverton. Other hatches include Blue Wing Olive (some), Winter/Summer Caddis (#18-22) and Stonefly nymphs (#16-18), Midge (#20-32). Also try Rusty Spinners (#16-18), Mahogany Duns/Blue Quills (#16-18), Tan Caddis (#16-18) and Winter Caddis (#18-22). Nymphing has been consistent, try Hendrickson nymphs, Stoneflies (#6-10), Pheasant Tails (#14-20), and Black Stoneflies (#18-22) among others.

Housatonic River - Fishing has been good and the river will be great for fishing this weekend. The TMA was stocked this week, flows are clear, and quite comfortable for wading, being lower than is typical for late April/early May (currently 818 cfs at Falls Village and 1,140 cfs at Gaylordsville). Morning water temperatures are in the mid-upper 40's°F.

Hatches/patterns include Hendrickson (#12-14,), Blue Wing Olive (a.k.a. *Baetis vagans*; #16-18), Green/Olive Caddis & Tan/Brown Caddis. Anglers using March Brown (#10-12), Pheasant Tail (#12-18) Copper John (#12-16). For streamers try Yellow/White Zonkers, brown and olive woolly buggers as well as white muddler minnows.

Rivers and streams stocking update (Note that all stocking schedules are subject to change):

In **western Connecticut**; the **Mill River TMA** (Fairfield), **Saugatuck River TMA**, **Farmington River** (Tariffville section), **Housatonic River TMA** (Cornwall, Kent), **Little River**, **Macedonia Brook** and the **Farmington River TMA** (*year-round catch-and-release area only*) were stocked.

In **eastern Connecticut**; the **Moosup River** (including the TMA), **Kitt Brook**, **Blackwells Brook**, **Shetucket River**, **Natchaug River**, **Hammonasset River** (including the TMA), **Scantic River** (both upper & lower portions), **Skungamaug River**, **Hop River**, **Jeremy River**, **Blackledge River**, **Mount Hope River** and **Fenton River** were stocked.

TROUT-LAKES & PONDS - Trout fishing has been generally good with reports from Quonnipaug Lake (good), Crystal Lake (nothing big), Cedar Lake (very good action, including lots of brook trout), Highland Lake ("trout are turning on"), Long Pond, Candlewood Lake (fair), Squantz Pond (good action on stockie rainbows), and Saugatuck Reservoir (fair-good fishing). Also some good reports from several of the Community Fishing Waters including Mohegan Park Pond (also a Trout Park).

Lakes and ponds stocking update (Note that all stocking schedules are subject to change):

In **western Connecticut**; **Mohegan Lake**, **Baummer Pond**, **Colony Park Pond**, **Fountain Lake**, and **Prospect Town Park Pond**.

In **eastern Connecticut**; **Moosup Pond**, **Somerville Mill Pond**, and **Rogers Lake**.

LAKE & POND BATHYMETRIC MAPS

Bathymetric maps of many of Connecticut's public access lakes and ponds can be found online at:

www.ct.gov/deep/lib/deep/fishing/general_information/lakebathymetrymaps.pdf

Both plain line maps and maps overlaying an aerial photo available.



TROUT PARKS – Fishing ranged from fair to very good at the Trout Parks. The **Stratton Brook**, **Natchaug River**, **Chatfield Hollow** (both pond and stream), **Wolfe Park** (Great Hollow Pond), **Southford Falls**, **Black Rock** (both pond and stream), **Kent Falls**, **Mohegan Park Pond** and **Valley Falls Park Pond** Trout Parks were stocked this week.

COMMUNITY FISHING WATERS- The **Keney Park Pond** and **Upper Fulton Park Pond** were stocked.

LARGEMOUTH BASS fishing was variable last week as spring continues to sputter along, although water temperatures warmed into the low to mid-50's F, with reports from Bantam Lake (fair action, but some big fish), Moodus Reservoir (slow to fair), Rogers Lake (fair at best), Messerschmidt Pond, Lake Zoar (tough for some anglers, better for others), Lake McDonough (good, bass were around wood structure), Park Pond (lots of action, but mostly on sub-legals), Candlewood Lake (largemouth fishing is picking up), Lake Lillinonah (fair to good for bass), Saugatuck Reservoir (some action), Mansfield Hollow Reservoir (slow) and Highland Lake (slow last week). **Tournament angler** reports are from East Twin Lake (slow-fair, 3.48 lb & 2.79 lb lunkers), Lake Lillinonah (tough find largemouth), Bantam Lake (tough for some but a number of bigger fish including a 6.7 lb, 5.7 lb and 5.5 lb bass), Lake Zoar (slow, 3.2 lb & 1.56 lb lunkers), Pattagansett Lake (very slow, with a 1.98 lb lunker), Coventry Lake (slow, with a 5 lb lunker), Amos Lake (fair-good, some size, fish averaged 2 lbs apiece, with a 4.7 lb lunker), and Pachaug Pond (slow-fair, 4.3 lb lunker).

SMALLMOUTH BASS. At Candlewood Lake, Some anglers found fair to good action, but the smallies befuddled many other anglers last week, good fishing reported at Lake Lillinonah, and a few smallmouth were being caught at Lake McDonough and Highland Lake. **Tournament angler** reports are from Lake Lillinonah (fair to good smallie fishing, with a 3.31 lb lunker), Bantam lake (a few in the bags for club, good for another group with a 3.58 lb lunker), Candlewood Lake (tough to fair,), Lake Zoar (slow, 1.65 lb & 0.83 lb lunkers).

NORTHERN PIKE. Some nice catches reported from Lake Lillinonah (Shepaug Arm).

WALLEYE action remains good at Squantz Pond but it's been slow at Saugatuck Reservoir.

BLACK CRAPPIE action continues to be good to very good throughout the state.

CONNECTICUT RIVER

The river has warmed some (up to 52° F on Monday, 4/25) and has risen some although flows are still well below typical late-April levels. Lots of bait fish in the river. **AMERICAN SHAD** can be found throughout the river (good action reported from anglers in the Enfield area). Shad darts and willow leafs generally work well. **STRIPED BASS** are being found in the river, still mostly schoolie size, but numbers of bigger fish are increasing, with a number of 20 lb plus catches reported. **BLACK CRAPPIE** fishing remains good. Anglers are finding good **SMALLMOUTH BASS** action in the Windsor to Enfield area (with a number of 2 lb plus fish), plus some fish are being found from below Hartford to

ZEBRA MUSSELS REMINDER

Zebra mussels are now found in a number of locations scattered throughout the Housatonic River and its impoundments including Lake Lillinonah (*since 2010*), Lake Zoar (*since 2010*) and Lake Housatonic (*since 2011*).

Prior to their discovery in Lakes Lillinonah and Zoar in 2010, zebra mussels had been found (1998) in CT only in East Twin Lake and West Twin Lake (Salisbury). Anglers fishing in any of these waters and western Connecticut in general **should use extra care to avoid transporting water, aquatic vegetation, and possibly zebra mussels to new locations.** Information

For more information including precautions that should be taken to prevent the spread of zebra mussels to additional waters, visit www.ct.gov/deep/invasivespecies or the Aquatic Invasive species section of the 2016 CT angler's Guide(www.ct.gov/deep/anglersguide).



Haddam in the mainstem. A few **LARGEMOUTH BASS** are being caught in the coves along the river. Some **CARP** are being caught in the lower river. Not much **WHITE PERCH** action reported yet.

NOTES & NOTICES:

BASHAN LAKE (drawdown). Bashan Lake remains drawn down (slow refill has begun – lake currently remains down approximately 5 feet – note that refill rate is dependent on rainfall amounts) following dam repairs and the state boat launch remains closed.

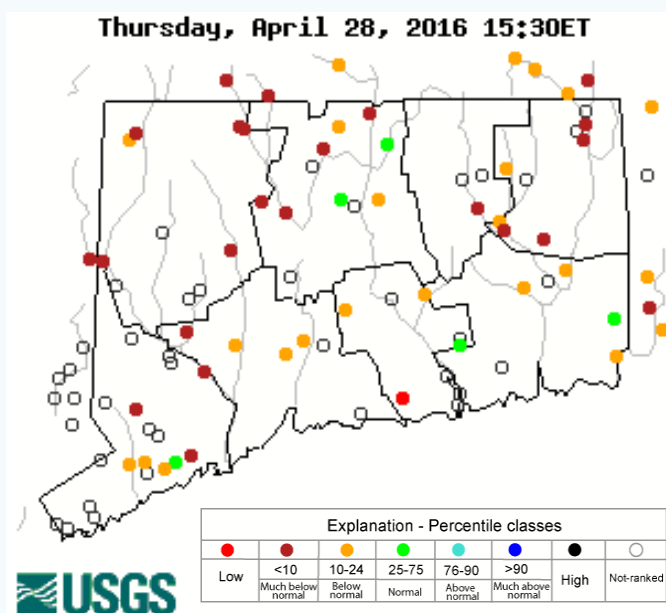
COVENTRY LAKE (invasive species alert). Hydrilla, a very highly invasive aquatic plant, has been found growing in Coventry Lake. All lake users should take extra care to check and clean their boats (including canoes, kayaks and rowing sculls), trailers, and fishing equipment before leaving the boat launch, or leaving the lakeshore.

DOOLEY POND (drawdown). A drawdown of Dooley Pond to facilitate dam repairs is ongoing (expected to last to September 1). The state boat launch is currently closed.

GLASGO POND (drawdown). A drawdown of Glasgo Pond to facilitate dam repairs began September 16. Launching of boats is difficult to impossible.

RAINBOW RESERVOIR (boat launch). The state boat launch on Rainbow Reservoir is currently scheduled to be closed for paving and redesign from Monday, May 2nd through Friday, May 6th (inclusive).

Stream flow conditions as of 4/28/2016



Data in the state graphic to the left are generated by the United States Geologic Survey (USGS) and are available on line at: <http://waterdata.usgs.gov/ct/nwis/rt>. A percentile is a value on a scale of one hundred that indicates the percent of data in the data set equal to or below it. For example streamflow greater than the 75th percentile means only ¼ of the streamflow values were above the value and thus would be considered "above normal". Stream flow between the 25th and 50th are considered to be "normal flows" and those 25th or less are considered to be "below normal".

MARINE FISHING REPORT



Surface water temperatures in Long Island Sound (LIS) are in the mid 50's °F. Check out the following web sites for more detailed water temperatures and marine boating conditions:

<http://www.mysound.uconn.edu/stationstat.html>

http://marine.rutgers.edu/mrs/sat_data/?nothumbs=1

<http://www.ndbc.noaa.gov/>

<http://www.wunderground.com/MAR/AN/330.html>

STRIPED BASS fishing is good to excellent for “schoolies” in most of the tidal rivers along the Connecticut shoreline. There are also some keepers in the mix as well (47 inch bass from the lower CT River). Striper spots include the Pawcatuck River, Mystic River, Thames River, Niantic River, lower Connecticut River (DEEP Marine Headquarters fishing pier and Dock and Dine), Black Hall River, New Haven Harbor (Sandy Point), Housatonic River and Norwalk Harbor including the islands. Sand and blood worms have been working the best, especially in turbid waters around the high tide. Casting swimming lures, small jigs (Chartreuse color) with twister tails, soft baits, and Kastmasters and other metal lures will all work. Fishing should get better as we approach the magical 55°F mark! The top-water fishing has been fanatastic...

WINTER FLOUNDER fishing remains slow but improving in the Poquonock River at Bluff Point State Park, Niantic River, The Brothers, Jordan Cove, lower Saugatuck River, Calf Pasture Beach area, Norwalk Islands (Cockonoe) and the channels in Norwalk Harbor. Other flounder spots include the lower Mystic River, and the mouth of the Thames River in the Pine Island area including Baker Cove.

WHITE PERCH fishing is good to excellent for these tasty panfish in most of the tidal rivers and coves along the Connecticut shoreline. Perch spots include the Pawcatuck River, Mystic River, Thames River, upper Niantic River, lower Connecticut River (DEEP Marine Headquarters fishing pier), Black Hall River, Lieutenant River, North/South Cove and Hamburg Cove. Shrimp and small worms are the key to success.

WEAKFISH have also arrived in Long Island Sound! The Race, Plum Gut and the north side of Long Island including Gardiners Bay and the Peconics are early bluefish spots. Look for weakfish in Guilford/New Haven Harbor over to the Milford/Stratford area along with the Peconics.

BLACK SEA BASS & SCUP OPENS MAY 1: Based on the CT DEEP Marine Fisheries Division trawl survey there are plenty of sea bass and scup in the sound. Looks to be a fantastic opener.

SHORE FISHING SPOTS & TIDE TABLE INFORMATION

To find a saltwater shore fishing spot close to where you live, go to the following website:

<http://www.lisrc.uconn.edu/coastalaccess/>.

For **Enhanced Opportunity Shore Fishing** sites and other fishing information including a site map go to the following website

<http://www.depdata.ct.gov/maps/saltwaterfish/map.htm>.

Please see page 64 of the [2016 CT Angler's Guide](#) for CT tide information.

Special section- BONUS STRIPED BASS FISHING PROGRAM-**STRIPED BASS REPORTING CARDS & TAGS NOW AVAILABLE.**

The Bonus Striped Bass Program will run from May 1 through December 31 in 2016. **DEEP will distribute TWO Harvest Tags and Harvest Report Cards per license holder this year.** The tag must be securely affixed to the jaw of the fish immediately upon harvest and must remain on the fish until you arrive home. The harvest report card must also be completed upon harvesting a qualifying fish. The report card should then be returned to DEEP within two days of harvest. The cards are pre-addressed to Marine Fisheries and are postage paid. You simply need to drop the completed card in any mail box.

Tags are available at DEEP Offices and Facilities listed below. There is a limit of **TWO TAGS** annually per Connecticut fishing license holder. However, for convenience one person may pick up at most **FOUR TAGS** for friends and relatives by presenting valid Connecticut fishing licenses for these anglers. Children are also eligible to receive a tag by signing up for a free [Youth Fishing Passport](#). **Tags are available on a first come first serve basis for as long as supplies last.**

DEEP Offices/Facilities	Address	Town	State	Zip
Marine Headquarters , M-F 8am-4pm, 860-434-6043	333 Ferry Road	Old Lyme	CT	06371
Eastern District , M-F 8:30am-4pm, 860-295-9523	209 Hebron Ave	Marlborough	CT	06447
Western District , M-F 8:30am-4pm, 860-485-0226	230 Plymouth Rd	Harwinton	CT	06791
Franklin WMA , 860-642-7239 M-F 8:30am-4:30pm	391 Route 32	Franklin	CT	06254
Sessions Woods WMA , M-F 8:30am-4pm, 860-675-8130	341 Milford Street (Rte 69)	Burlington	CT	06013
CTDEEP Main Office M-F 9am-4pm, 860-424-3105	79 Elm Street	Hartford	CT	06106

Program Regulations

- A bonus striped bass is at least 22 inches but less than 28 inches.
- Open Season: May 1 through December 31, 2015.
- Only one bonus striped bass may be harvested daily.
- The fish must be tagged immediately upon harvest, with the tag securely affixed to the lower jaw.
- The tag must remain on the fish until you have returned to your home or other location where the fish is to be consumed.
- Anglers are also required to complete a bonus striper report card provided with the tag immediately upon harvesting a qualifying fish.
- Mail the report card back to Marine Fisheries within two days of harvesting the fish. The card is already addressed and postage paid for return on the reverse side. It's free, so please mail it back to assure continuation of this program.
- Tags are valid in Connecticut state waters only.
- The normal limit of one (1) striped bass 28 inches or greater may also be harvested.

Voucher Distribution

A total of 3,018 vouchers will be made available at DEEP offices/facilities, distributed by ENCON Officers, and CT DEEP Marine Angler Survey creel agents. There is no fee for the tags. A limited number of tags will be reserved for programs such as "Take a Kid Fishing", "Take a Veteran Fishing", Municipal youth and urban fishing programs. Please contact Marine Fisheries (deep.marine.fisheries@ct.gov or telephone: 860-434-6043) if your organizations supports such a program and you would like to receive vouchers. The Bonus Striped Bass Voucher Program runs from **May 1 through December 31** in 2015. For convenience one person may pick up vouchers for others by presenting valid fishing licenses for these anglers. Children are also eligible to receive a voucher by signing up for a free [Youth Fishing Passport](#). Vouchers will be available on a first come first serve basis for as long as supplies last.

For Current Connecticut Recreational Fishing Regulations: Anglers should consult the 2016 Connecticut Anglers Guide which is now available at most Town Clerks Offices, DEEP offices and at tackle stores selling fishing licenses. Current regulations, electronic versions of the Angler's Guide and additional information can all be accessed on the DEEP website at: www.ct.gov/deep/fishing.

The Connecticut Department of Energy and Environmental Protection is an Affirmative Action/Equal Opportunity Employer that is committed to complying with the requirements of the Americans with Disabilities Act. Please contact us at (860) 418-5910 or deep.accommodations@ct.gov if you have a disability and need a communication aid or service; have limited proficiency in English and may need information in another language; or if you wish to file an ADA or Title VI discrimination complaint.

DEEP WEEKLY Fishing Report



**Connecticut Department of
ENERGY & ENVIRONMENTAL PROTECTION**

79 Elm Street, Hartford, CT 06106
www.ct.gov/deep